

向心关节轴承公差 Tolerances of radial spherical plain bearings

内圈 Inner ring

d mm		dmp μm		Vdp μm	Vdmp μm	Bs μm	
超过 over	到 incl	max	min	max	max	max	min
30	50	0	-12	12	9	0	-120
50	80	0	-15	15	11	0	-150
80	120	0	-20	20	15	0	-200
120	180	0	-25	25	19	0	-250
180	250	0	-30	30	23	0	-300
250	315	0	-35	35	26	0	-350
315	400	0	-40	40	30	0	-400

外圈 Outer ring

D mm		Dmp μm		VDp μm	VDmp μm	Cs μm	
超过 over	到 incl	max	min	max	max	max	min
30	50	0	-11	15	8	0	-240
50	80	0	-13	17	10	0	-300
80	120	0	-15	20	11	0	-400
120	150	0	-18	24	14	0	-500
150	180	0	-25	33	19	0	-500
180	250	0	-30	40	23	0	-600
250	315	0	-35	47	26	0	-700
315	400	0	-40	53	30	0	-800
400	500	0	-45	60	34	0	-900
500	630	0	-50	67	38	0	-1000

向心关节轴承配合 Fits of radial spherical plain bearings

轴配合 Shaft fits

工作条件 Operating conditions	滑动摩擦副 Sliding contact surface combination	
	润滑型 repuring maintenance	自润滑型 maintenance-free
各种载荷, 间隙或过渡配合 Loads of all kinds, clearance or transition fit	h6 轴淬火 hardened shaft	h6,g6
各种载荷, 过盈配合 Loads of all kinds, interference fit	M6	K6

支承座配合 Housing fits

工作条件 Operating conditions	滑动摩擦副 Sliding contact surface combination	
	润滑型 repuring maintenance	自润滑型 maintenance-free
轻载 Light loads , 可轴向移动 Axial displacement required	H7	H7
重载 Heavy loads	M7	KM77
轻合金支承座 Light alloy housing	N7	M7

轴径公差 Shaft diameter tolerances

轴径 Shaft diameter, mm		轴径公差 Shaft diameter tolerances, μm							
超过 over	到 incl	g6		h6		k6		m6	
		high	low	high	low	high	low	high	low
3	6	-4	-12	0	-8	+9	+1	+12	+4
6	10	-5	-14	0	-9	+10	+1	+15	+6
10	18	-6	-17	0	-11	+12	+1	+18	+7
18	30	-7	-20	0	-13	+15	+2	+21	+8
30	50	-9	-25	0	-16	+18	+2	+25	+9
50	80	-10	-29	0	-19	+21	+2	+30	+11
80	120	-12	-34	0	-22	+25	+3	+35	+13

120	180	14	39	0	25	+28	+3	+40	+15
180	250	-15	-44	0	-29	+33	+4	+46	+17
250	315	17	49	0	32	+36	+4	+52	+20
315	400	-18	-54	0	-36	+40	+4	+57	+21
400	500	-20	-60	0	-40	+45	+5	+63	+23
500	600	-22	-66	0	-44	+47	0	+70	+26

支承座孔公差 Housing bore tolerances

支承座孔径 Housing bore diameter,mm		支承座孔径公差 Housing bore tolerances, μ m							
		H7		K7		M7		N7	
超过 over	到 incl	low	high	low	high	low	high	low	high
10	18	0	+18	-12	+6	-18	0	-23	-5
18	30	0	+21	-15	+6	-21	0	-28	-7
30	50	0	+25	-18	+7	-25	0	-33	-8
50	80	0	+30	-21	+9	-30	0	-39	-9
80	120	0	+35	-25	+10	-35	0	-45	-10
120	150	0	+40	-28	+12	-40	0	-52	-12
150	180	0	+40	-28	+12	-40	0	-52	-12
180	250	0	+46	-33	+13	-46	0	-60	-14
250	315	0	+52	-36	+16	-52	0	-66	-14
315	400	0	+57	-40	+17	-57	0	-73	-16
400	500	0	+63	-45	+18	-63	0	-80	-17
500	630	0	+70	-70	0	—	—	—	—
630	800	0	+80	-80	0	—	—	—	—

钢对 PTFE 复合材料向心关节轴承径向游隙

Radial internal clearance of steel-on-TPFE composite material radial spherical plain bearings

d mm		基本组 group normal	
超过 over	到 incl	min	max
100	120	85	285
120	180	100	335
180	220	100	355
220	240	110	356
240	280	110	380
280	300	135	415
300	320	135	490
320	360	135	490
360	380	135	490
380	400	135	510
400	480	145	550
480	500	145	570

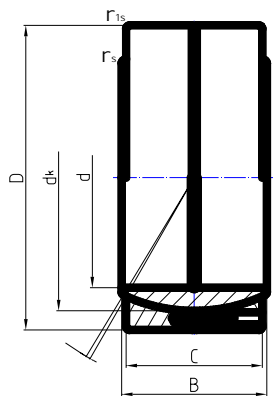
钢对 PTFE 编制物向心关节轴承径向游隙

Radial internal clearance of steel-on-TPFE fabric radial spherical plain bearings

d mm		基本组 group normal	
超过 over	到 incl	min	max
35	60	0	60
60	90	0	72
90	140	0	85
140	240	0	100
240	300	0	110
300	340	125	239
340	420	135	261
420	530	145	285

滑动摩擦副：钢/ABC 010

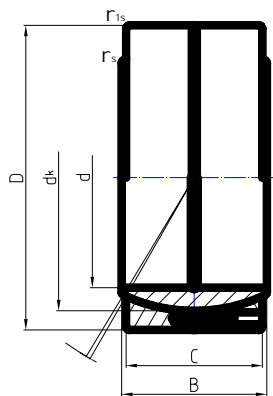
Sliding contact surface : steel/ ABC 010



轴承型号 Bearing type	外形尺寸 Dimensions								额定载荷 Load ratings,kN		重量 weight kg
	d	D	B	C	dk	rs min	r1s min	°	动载荷 Dynamic	静载荷 Static	
GE100HABC010	100	150	71	67	135	1	1	2	810	1350	4.51
GE110HABC010	110	160	78	74	145	1	1	2	960	1650	5.35
GE120HABC010	120	180	85	80	160	1	1	2	1150	1950	7.96
GE140HABC010	140	210	100	95	185	1	1	2	1580	2700	13.00
GE160HABC010	160	230	115	109	210	1	1	2	2060	3600	16.60
GE180HABC010	180	260	128	122	240	1.1	1.1	2	2630	4600	24.40
GE200HABC010	200	290	140	134	260	1.1	1.1	2	3130	5500	33.50
GE220HABC010	220	320	155	148	290	1.1	1.1	2	3860	6800	45.80
GE240HABC010	240	340	170	162	310	1.1	1.1	2	4510	8000	53.70
GE260HABC010	260	370	185	175	340	1.1	1.1	2	5350	9500	69.50
GE280HABC010	280	400	200	190	370	1.1	1.1	2	6320	11200	89.50
GE300HABC010	300	430	212	200	390	1.1	1.1	2	7020	12500	110
GE320HABC010	320	460	230	218	414	1.1	3	2	8120	14500	135
GE340HABC010	340	480	243	230	434	1.1	3	2	8980	16000	150
GE360HABC010	360	520	258	243	474	1.1	4	2	10300	18400	200
GE380HABC010	380	540	272	258	494	1.5	4	2	11400	20400	220
GE400HABC010	400	580	280	265	514	1.5	4	2	12200	21800	275
GE420HABC010	420	600	300	280	534	1.5	4	2	13400	2400	300
GE440HABC010	440	630	315	300	574	1.5	4	2	15400	27600	360
GE460HABC010	460	650	325	308	593	1.5	4	2	16400	29300	380
GE480HABC010	480	680	340	320	623	2	5	2	17900	3200	435
GE500HABC010	500	710	355	335	643	2	5	2	19300	34600	500
GE530HABC010	530	750	375	355	673	2	5	2	21500	38500	585
GE560HABC010	560	800	400	380	723	2	5	2	24700	44300	730
GE600HABC010	600	850	425	400	773	2	6		27800	49800	860
GE630HABC010	630	900	450	425	813	3	6	2	31000	55700	1040

滑动摩擦副：钢/ABC 080

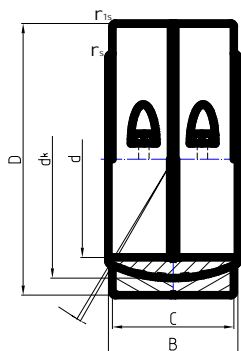
Sliding contact surface : steel/ ABC 080



轴承型号 Bearing type	外形尺寸 Dimensions								额定载荷 Load ratings,kN		重量 weight kg
	d	D	B	C	dk	rs min	r1s min	°	动载荷 Dynamic	静载荷 Static	
GE100HABC080	100	150	71	67	135	1	1	2	860	1750	4.51
GE110HABC080	110	160	78	74	145	1	1	2	1030	2070	5.35
GE120HABC080	120	180	85	80	160	1	1	2	1220	2470	7.96
GE140HABC080	140	210	100	95	185	1	1	2	1680	3400	13.00
GE160HABC080	160	230	115	109	210	1	1	2	2190	4430	16.60
GE180HABC080	180	260	128	122	240	1.1	1.1	2	2810	5660	24.40
GE200HABC080	200	290	140	134	260	1.1	1.1	2	3340	6740	33.50
GE220HABC080	220	320	155	148	290	1.1	1.1	2	4120	8300	45.80
GE240HABC080	240	340	170	162	310	1.1	1.1	2	4820	9720	53.70
GE260HABC080	260	370	185	175	340	1.1	1.1	2	5710	11500	69.50
GE280HABC080	280	400	200	190	370	1.1	1.1	2	6740	13600	89.50
GE300HABC080	300	430	212	200	390	1.1	1.1	2	7480	15100	110
GE320HABC080	320	460	230	218	414	1.1	3	2	9020	18800	135
GE340HABC080	340	480	243	230	434	1.1	3	2	9980	20800	150
GE360HABC080	360	520	258	243	474	1.1	4	2	11500	24000	200
GE380HABC080	380	540	272	258	494	1.5	4	2	12700	26600	220
GE400HABC080	400	580	280	265	514	1.5	4	2	14800	29200	275
GE420HABC080	420	600	300	280	534	1.5	4	2	16200	32000	300
GE440HABC080	440	630	315	300	574	1.5	4	2	18700	36900	360
GE460HABC080	460	650	325	308	593	1.5	4	2	19900	39000	380
GE480HABC080	480	680	340	320	623	2	5	2	21600	42700	435
GE500HABC080	500	710	355	335	643	2	5	2	23400	46100	500
GE530HABC080	530	750	375	355	673	2	5	2	25900	51200	585
GE560HABC080	560	800	400	380	723	2	5	2	30300	61100	730
GE600HABC080	600	850	425	400	773	2	6		34100	68700	860
GE630HABC080	630	900	450	425	813	3	6	2	38100	76800	1040

滑动摩擦副：钢/ABC 050

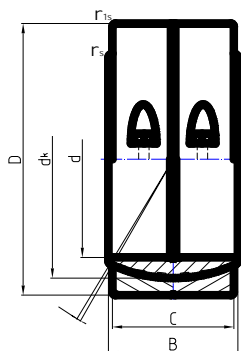
Sliding contact surface : steel/ ABC 050



轴承型号 Bearing type	外形尺寸 Dimensions								额定载荷 Load ratings,kN		重量 weight kg
	d	D	dk	B	C	rs min	ris min	°	动载荷 Dynamic	静载荷 Static	
GE30HABC050	30	47	41	22	18	0.6	0.6	6	85	190	0.16
GE35HABC050	35	55	47	25	20	0.6	1.0	6	125	250	0.25
GE40HABC050	40	62	53	28	22	0.6	1.0	7	153	306	0.34
GE45HABC050	45	68	60	32	25	0.6	1.0	7	195	390	0.46
GE50HABC050	50	75	66	35	28	0.6	1.0	6	245	490	0.61
GE60HABC050	60	90	80	44	36	0.6	1.0	6	380	760	1.12
GE70HABC050	70	105	92	49	40	1.0	1.0	6	485	970	1.68
GE80HABC050	80	120	105	55	45	1.0	1.0	6	625	1250	2.48
GE90HABC050	90	130	115	60	50	1.0	1.0	5	760	1520	2.98
GE100HABC050	100	150	130	70	55	1.0	1.0	6	865	1730	4.75
GE110HABC050	110	160	140	70	55	1.0	1.0	6	930	1860	5.17
GE120HABC050	120	180	160	85	70	1.0	1.0	6	1340	2700	8.72
GE140HABC050	140	210	180	90	70	1.0	1.0	7	1500	3000	11.9
GE160HABC050	160	230	200	105	80	1.0	1.0	8	1930	3800	15.1
GE180HABC050	180	260	225	105	80	1.0	1.0	6	2160	4300	19.8
GE200HABC050	200	290	250	130	100	1.0	1.0	7	3000	6000	30.3
GE220HABC050	220	320	275	135	100	1.0	1.0	8	3350	6550	38
GE240HABC050	240	340	300	140	100	1.1	1.1	8	3600	7200	42.5
GE260HABC050	260	370	325	150	110	1.1	1.1	7	4300	8650	55.1
GE280HABC050	280	400	350	155	120	1.1	1.1	6	5000	10000	69.3
GE300HABC050	300	430	375	165	120	1.1	1.1	7	5400	10800	82.9
GE320HABC050	320	460	400	175	130	1.1	3.0	7	6000	12000	102.2
GE340HABC050	340	480	420	185	140	1.1	3.0	6	6600	13000	114.4
GE360HABC050	360	520	450	195	150	1.1	4.0	6	7750	15000	149.5
GE380HABC050	380	540	470	205	150	1.5	4.0	7	8200	16000	159.4
GE400HABC050	400	580	500	215	160	1.5	4.0	6	9000	18000	202.6

滑动摩擦副：钢/ABC 050

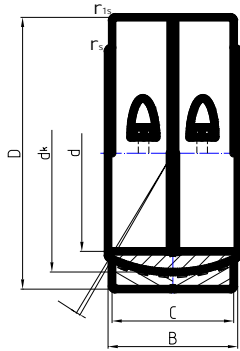
Sliding contact surface : steel/ ABC 050



轴承型号 Bearing type	外形尺寸 Dimensions								额定载荷 Load ratings,kN		重量 weight kg
	d	D	dk	B	C	rs min	ris min	°	动载荷 Dynamic	静载荷 Static	
GEW30HABC050	30	47	42	22	20	0.6	0.6	2	50	125	0.18
GEW35HABC050	35	55	48	25	23	0.6	0.6	2	65	165	0.28
GEW40HABC050	40	62	55	29	27	0.6	0.6	2	85	220	0.40
GEW45HABC050	45	68	61	32	30	0.6	0.6	2	105	270	0.52
GEW50HABC050	50	75	68	36	34	0.6	0.6	2	130	346	0.72
GEW60HABC050	60	90	81	43	40	1.0	1.0	2	185	480	1.20
GEW70HABC050	70	105	95	50	47	1.0	1.0	2	256	660	1.91
GEW80HABC050	80	120	108	57	54	1.0	1.0	2	330	870	2.86
GEW90HABC050	90	130	122	64	60	1.0	1.0	2	420	1090	4.04
GEW100HABC050	100	150	135	71	67	1.0	1.0	2	610	1360	5.54
GEW110HABC050	110	160	145	78	74	1.0	1.0	2	730	1620	6.58
GEW120HABC050	120	180	160	85	80	1.0	1.0	2	860	1900	9.48
GEW140HABC050	140	210	185	100	95	1.0	1.0	2	1200	2650	15.2
GEW160HABC050	160	230	210	115	109	1.0	1.0	2	1620	3560	19.6
GEW180HABC050	180	260	240	128	122	1.1	1.1	2	2100	4600	28.4
GEW200HABC050	200	290	260	140	134	1.1	1.1	2	2490	5400	38.6
GEW220HABC050	220	320	290	155	148	1.1	1.1	2	3100	6760	52.5
GEW240HABC050	240	340	310	170	162	1.1	1.1	2	3680	8000	61.2
GEW260HABC050	260	370	340	185	175	1.1	1.1	2	4360	9480	80.0
GEW280HABC050	280	400	370	200	190	1.1	1.1	2	5110	11100	102.6
GEW300HABC050	300	430	390	212	200	1.1	1.1	2	5660	12300	124.8
GEW320HABC050	320	460	420	230	218	1.1	3.0	2	6580	14470	156.8
GEW340HABC050	340	480	440	243	230	1.1	3.0	2	7360	16200	173.5
GEW360HABC050	360	520	480	258	243	1.1	4.0	2	8320	18300	227.4
GEW380HABC050	380	540	500	272	258	1.5	4.0	2	9340	20550	251.2
GEW400HABC050	400	580	520	280	265	1.5	4.0	2	9950	21900	306.4
GEW420HABC050	420	600	540	300	280	1.5	4.0	2	10900	24000	336.8
GEW440HABC050	440	630	580	315	300	1.5	4.0	2	12680	27900	402.5
GEW460HABC050	460	650	600	325	308	1.5	5.0	2	13360	29400	429.0
GEW480HABC050	480	680	630	340	320	1.5	5.0	2	14450	31800	492.6
GEW500HABC050	500	710	650	355	355	2.0	5.0	2	15820	34800	560.8
GEW530HABC050	530	750	680	375	355	2.0	5.0	2	17380	38250	654.0
GEW560HABC050	560	800	730	400	380	2.0	5.0	2	19770	43500	815.0
GEW600HABC050	600	850	780	425	400	2.0	6.0	2	22840	50250	956.8
GEW630HABC050	630	900	820	450	425	2.0	6.0	2	25570	56250	1154.6

滑动摩擦副：钢/ABC 030

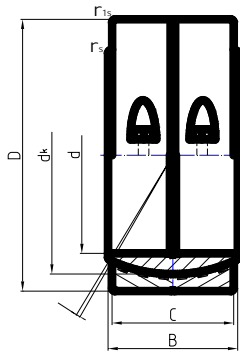
Sliding contact surface : steel/ ABC 030



轴承型号 Bearing type	外形尺寸 Dimensions								额定载荷 Load ratings,kN		重量 weight kg
	d	D	dk	B	C	rs min	r1s min	°	动载荷 Dynamic	静载荷 Static	
GE100HABC030	100	150	130	70	55	1.0	1.0	6	865	1730	4.75
GE110HABC030	110	160	140	70	55	1.0	1.0	6	930	1860	5.17
GE120HABC030	120	180	160	85	70	1.0	1.0	6	1340	2700	8.72
GE140HABC030	140	210	180	90	70	1.0	1.0	7	1500	3000	11.9
GE160HABC030	160	230	200	105	80	1.0	1.0	8	1930	3800	15.1
GE180HABC030	180	260	225	105	80	1.0	1.0	6	2160	4300	19.8
GE200HABC030	200	290	250	130	100	1.0	1.0	7	3000	6000	30.3
GE220HABC030	220	320	275	135	100	1.0	1.0	8	3350	6550	38
GE240HABC030	240	340	300	140	100	1.1	1.1	8	3600	7200	42.5
GE260HABC030	260	370	325	150	110	1.1	1.1	7	4300	8650	55.1
GE280HABC030	280	400	350	155	120	1.1	1.1	6	5000	10000	69.3
GE300HABC030	300	430	375	165	120	1.1	1.1	7	5400	10800	82.9
GE320HABC030	320	460	400	175	130	1.1	3.0	7	6000	12000	102.2
GE340HABC030	340	480	420	185	140	1.1	3.0	6	6600	13000	114.4
GE360HABC030	360	520	450	195	150	1.1	4.0	6	7750	15000	149.5
GE380HABC030	380	540	470	205	150	1.5	4.0	7	8200	16000	159.4
GE400HABC030	400	580	500	215	160	1.5	4.0	6	9000	18000	202.6

滑动摩擦副：钢/ABC 030

Sliding contact surface : steel/ ABC 030



轴承型号 Bearing type	外形尺寸 Dimensions								额定载荷 Load ratings,kN		重量 weight kg
	d	D	dk	B	C	r _s min	r _{1s} min	°	动载荷 Dynamic	静载荷 Static	
GEW100HABC030	100	150	135	71	67	1.0	1.0	2	650	1280	5.22
GEW110HABC030	110	160	145	78	74	1.0	1.0	2	780	1530	6.20
GEW120HABC030	120	180	160	85	80	1.0	1.0	2	920	1800	8.96
GEW140HABC030	140	210	185	100	95	1.0	1.0	2	1280	2500	14.4
GEW160HABC030	160	230	210	115	109	1.0	1.0	2	1720	3360	18.4
GEW180HABC030	180	260	240	128	122	1.1	1.1	2	2220	4340	26.7
GEW200HABC030	200	290	260	140	134	1.1	1.1	2	2620	5110	36.5
GEW220HABC030	220	320	290	155	148	1.1	1.1	2	3270	6380	49.5
GEW240HABC030	240	340	310	170	162	1.1	1.1	2	3880	7560	58.1
GEW260HABC030	260	370	340	185	175	1.1	1.1	2	4590	8960	75.2
GEW280HABC030	280	400	370	200	190	1.1	1.1	2	8380	10500	96.2
GEW300HABC030	300	430	390	212	200	1.1	1.1	2	6170	11500	117.7
GEW320HABC030	320	460	415	230	218	1.1	3.0	2	6920	13590	147.3
GEW340HABC030	340	480	435	243	230	1.1	3.0	2	7750	15120	163.2
GEW360HABC030	360	520	475	258	243	1.1	4.0	2	8760	17080	212.7
GEW380HABC030	380	540	495	272	258	1.5	4.0	2	9830	19180	235.3
GEW400HABC030	400	580	515	280	265	1.5	4.0	2	10480	20440	289.2
GEW420HABC030	420	600	535	300	280	1.5	4.0	2	11490	22400	318.1
GEW440HABC030	440	630	575	315	300	1.5	4.0	2	13350	26040	377.5
GEW460HABC030	460	650	595	325	308	1.5	5.0	2	14070	27440	402.3
GEW480HABC030	480	680	625	340	320	2.0	5.0	2	15220	29680	461.1
GEW500HABC030	500	710	645	355	355	2.0	5.0	2	16650	32480	527.2
GEW530HABC030	530	750	675	375	355	2.0	5.0	2	18300	35700	617.5
GEW560HABC030	560	800	725	400	380	2.0	5.0	2	20800	40600	767.2
GEW600HABC030	600	850	775	425	400	2.0	6.0	2	24050	46900	899.1
GEW630HABC030	630	900	815	450	425	3.0	6.0	2	26920	52500	1087.2