



JIAXING COB-SRIM BEARING CO.,LTD

Zhengyuan Road, Jiaxing Economic Development Zone, Zhejiang, China.

Tel: +86 (0)574 8767 2396,
www.cob-srim.com,

Fax: +86 (0)574 8767 2075,
cobsrim@yahoo.cn.

oil film pressure and area Calculation of the report

According to Drawings the requirements and parameters, the calculation results are as follows :

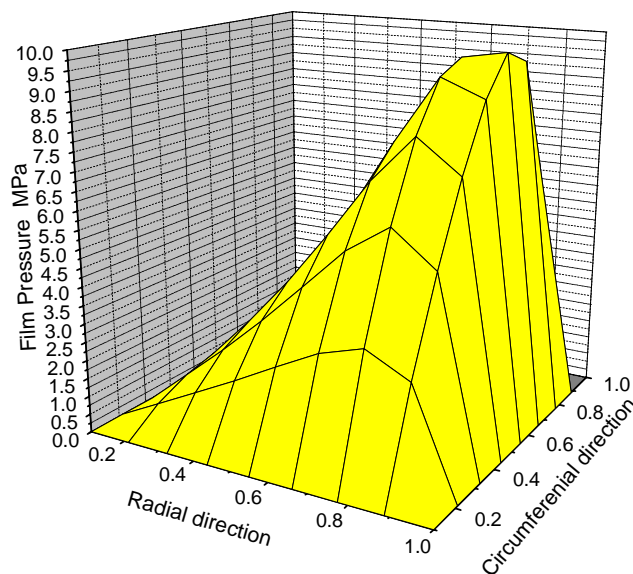
一、 Parameters

- 1、 THURST BEARING pads(PTFE) Center support diameter1080mm
- 2、 speed : 41.27rpm
- 3、 the load : 2078KN (12), 173.2KN
- 4、 Grade of oil : ISO VG320
- 5、 into the oil temperature 45 , Ambient temperature 45
- 6、 THURST BEARING pads(PTFE) tile angle 24°

二、 The results

- 1、 oil film pressure distribution

Maximum oil film pressure : 9.8Mpa , following 1 and 2.



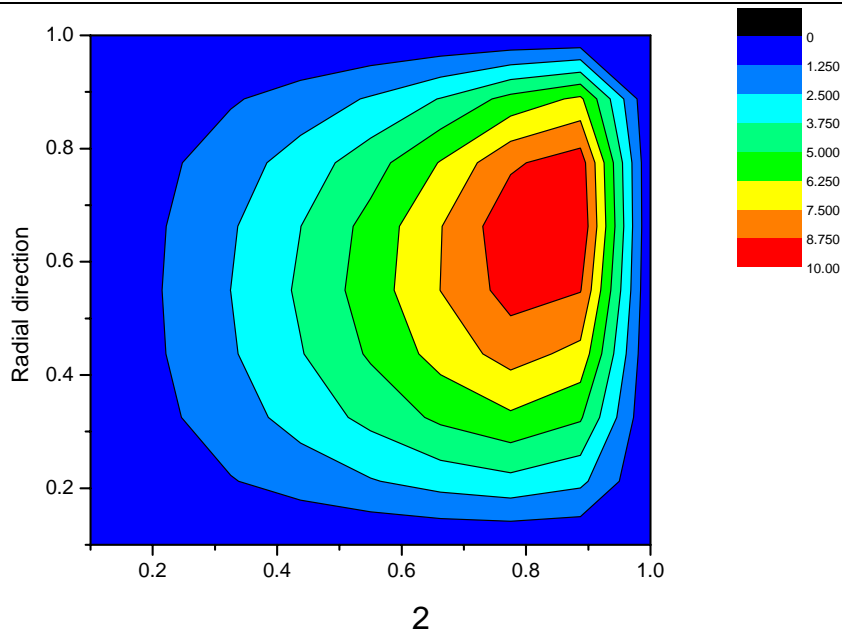


JIAXING COB-SRIM BEARING CO.,LTD

Zhengyuan Road, Jiaxing Economic Development Zone, Zhejiang, China.

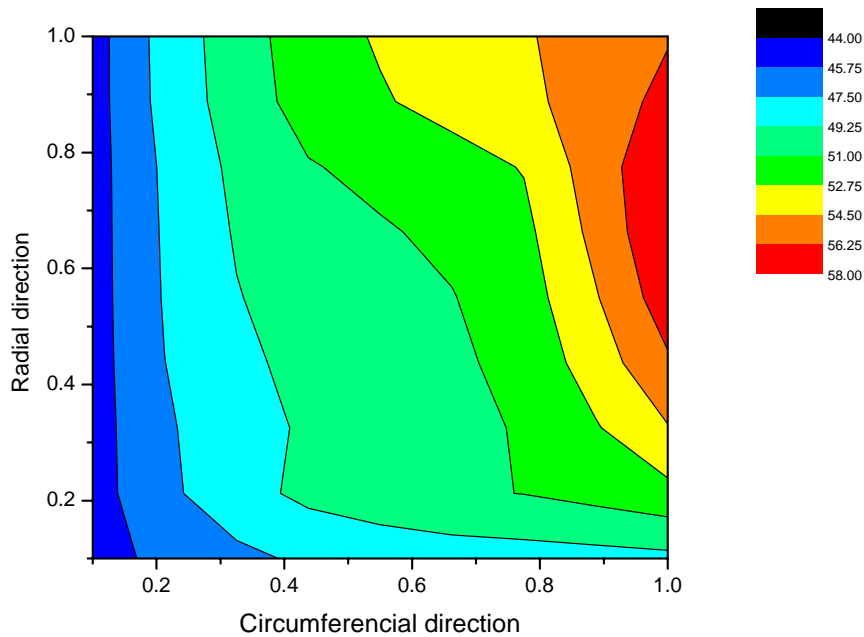
Tel: +86 (0)574 8767 2396,
www.cob-srim.com,

Fax: +86 (0)574 8767 2075,
cobsrim@yahoo.cn.



2、 Oil film temperature distribution

The maximum oil film temperature 57.47 。 following 3 and 4.



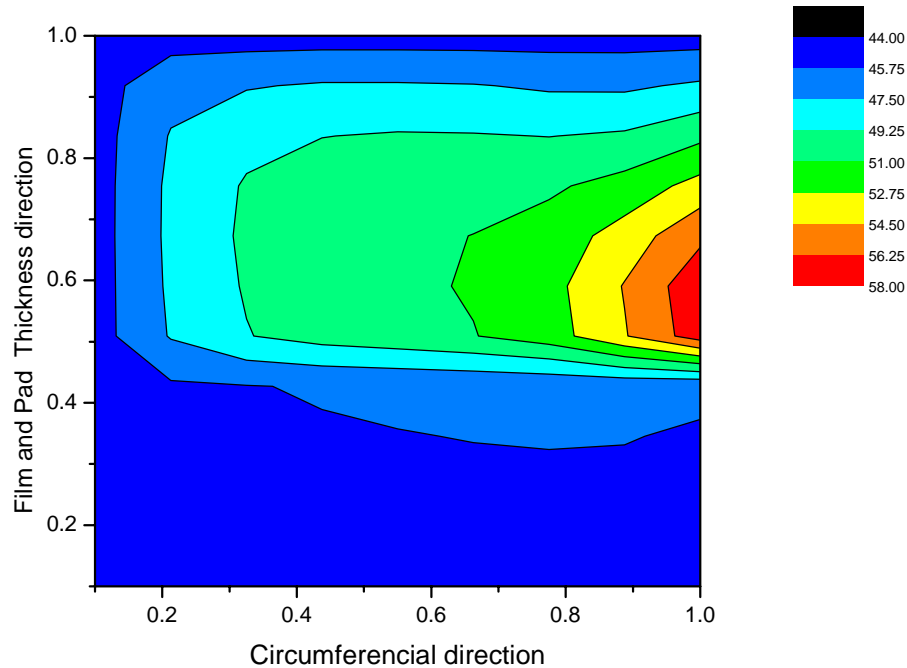


JIAXING COB-SRIM BEARING CO.,LTD

Zhengyuan Road, Jiaxing Economic Development Zone, Zhejiang, China.

Tel: +86 (0)574 8767 2396,
www.cob-srim.com,

Fax: +86 (0)574 8767 2075,
cobsrim@yahoo.cn.



4

3、 oil film thickness

Minimum oil film thickness $38.9\mu\text{m}$,At the oil out side, Maximum oil film thickness $176.4\mu\text{m}$, Located into the oil side.

4、 friction : 296.47 N

5、 the friction power : 699.87 W

6、 into the oil flow : 3.16 l/min